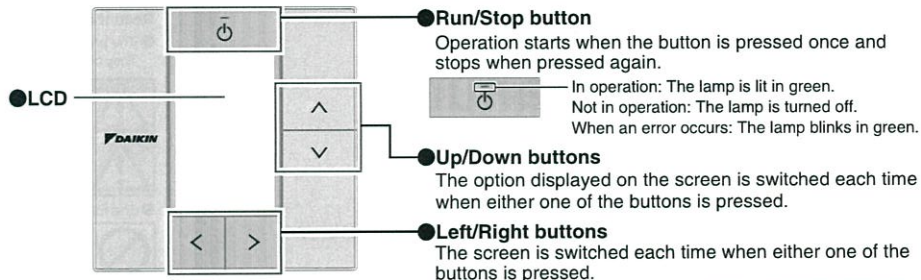


Basic Operation Method

Names and Functions of Remote Controller



Temperature setting

Basic screen

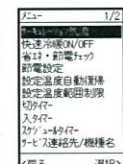
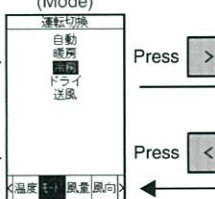
Operation mode selector

Airflow rate control

Airflow direction setting

Menu screen

Information screen

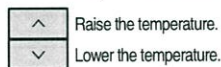


The following information is displayed.

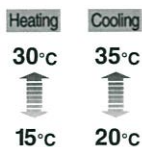
- Upper side
- Service contact
 - Model name of the unit in use
- Lower side
- Error code
 - Current setting status
 - Information about replacement/cleaning
 - QR code of operation manual etc.

Display items in the lower side can be switched by pressing .

Press the up/down button.



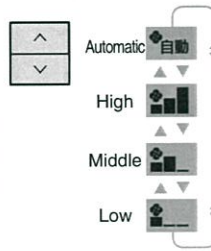
Setting range



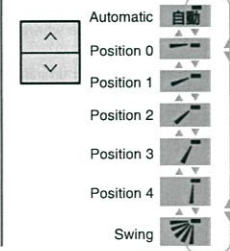
Press the up/down buttons to switch operation mode.



Press the up/down buttons to change the airflow rate.



Press the up/down buttons to change the airflow direction.



You can set detailed settings such as the ON/OFF timer from the menu screen. For the types of menu and the setting method, refer to our operation manual on our website.

You can move from one menu to another by pressing buttons and each setting screen is displayed when you press on the item displayed highlighted.

The above is an example. Items that can be set vary with the indoor unit model in use. The screen will automatically go back to the basic screen if a button is not pressed for approximately 10 seconds.